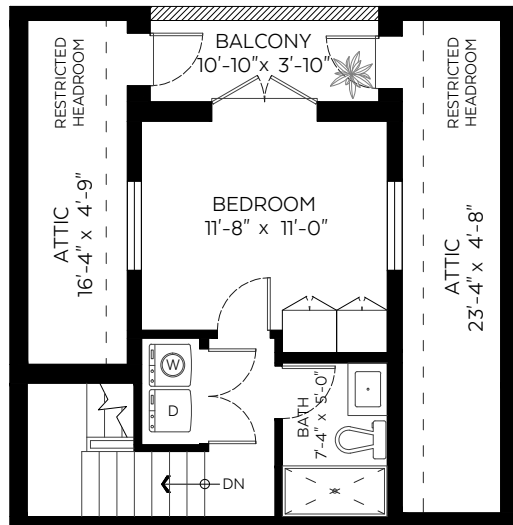


# 6341 Yew Street, Vancouver, B.C.

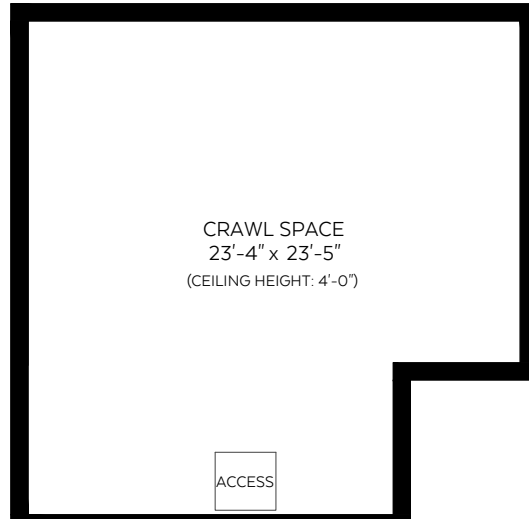
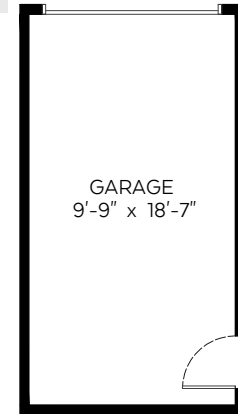
Main Floor:	575 sq.ft.
Upper Floor:	594 sq.ft.
Top Floor:	305 sq.ft.
<b>Total:</b>	<b>1,474 sq.ft.</b>
Crawl Space:	575 sq.ft.
Attic:	240 sq.ft.

## Auxiliary Area

Garage:	208 sq.ft.
Deck:	24 sq.ft.
Balcony:	42 sq.ft.

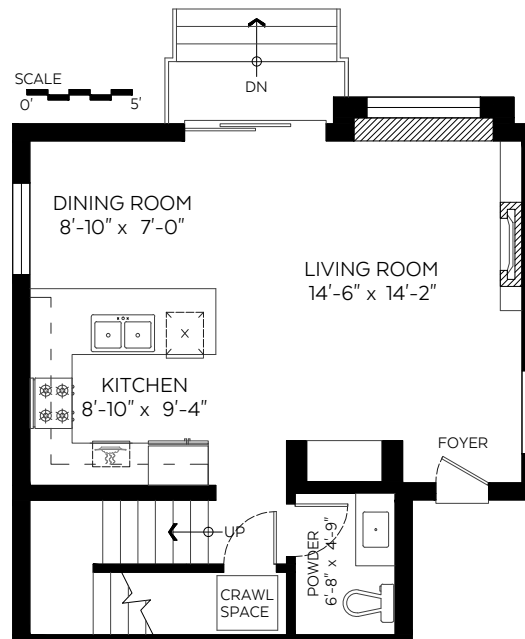


**Top Floor Plan**  
 Floor Area: 305 sq.ft.  
 Ceiling Height: 10 ft.



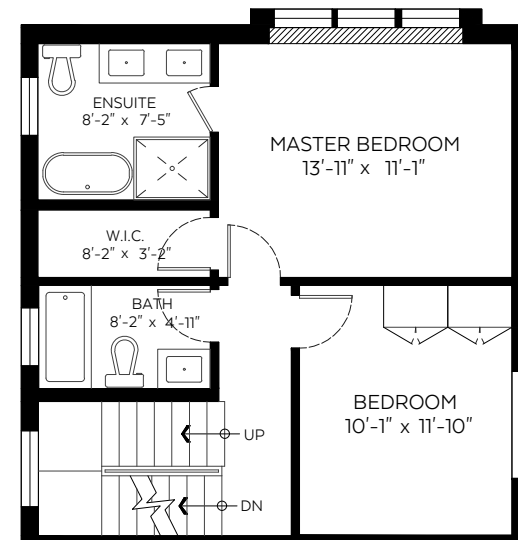
**Crawl Space Floor Plan**

Floor Area: 575 sq.ft.  
 Ceiling Height: 4 ft.



**Main Floor Plan**

Floor Area: 575 sq.ft.  
 Ceiling Height: 9 ft.



**Upper Floor Plan**

Floor Area: 594 sq.ft.  
 Ceiling Height: 9 ft.

Valid Until: July 01, 2022

The floor plan is not suitable for architectural/construction and is covered under E&O. © Excelsior Measuring Inc. 2019. All rights reserved for Excelsior Measuring Inc. Users shall not publish and distribute such material (in whole or in part) and/or incorporate it in other works in any form.



**NORTH**



Booked on  
 the Pixilink App™

