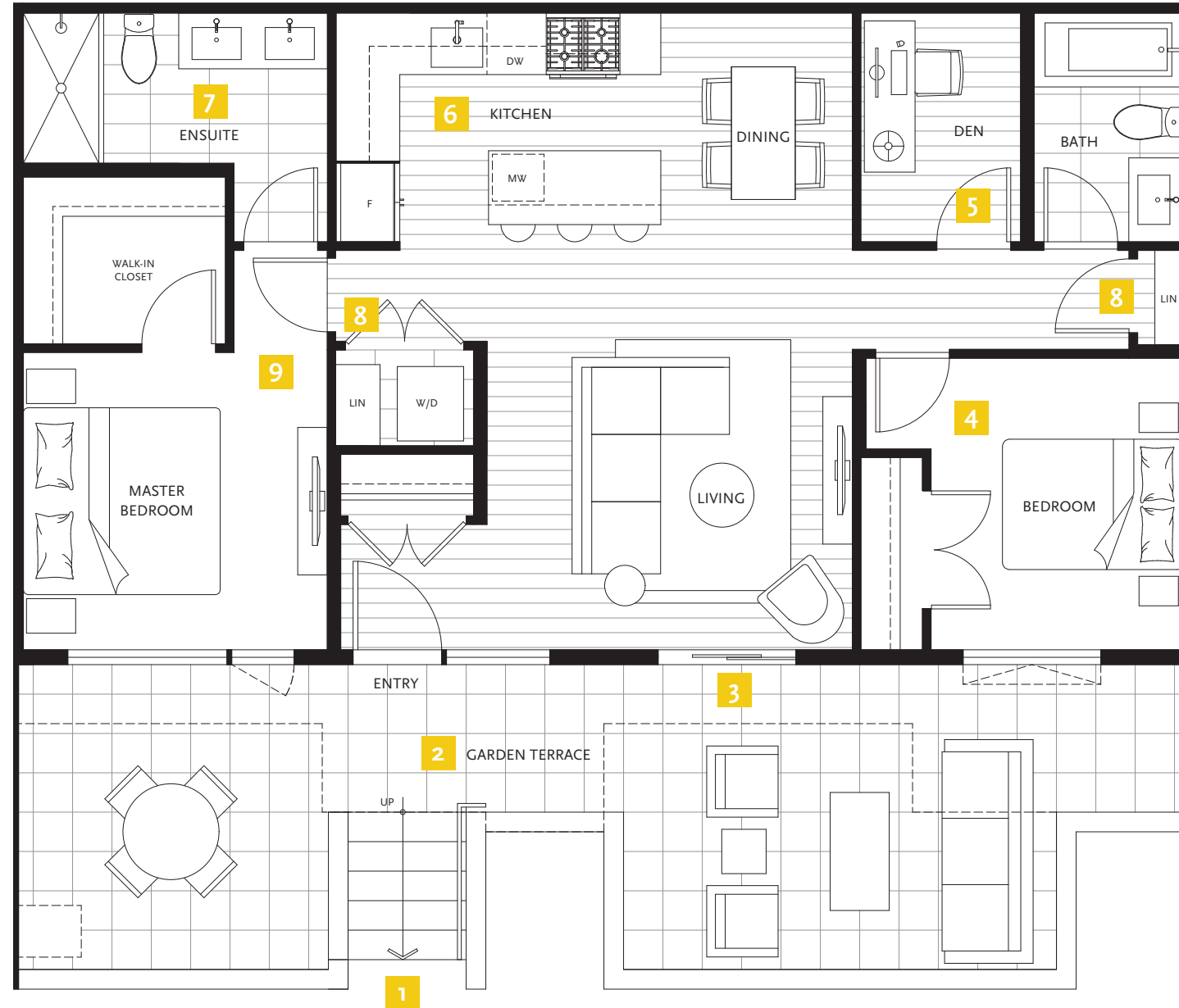


GARDEN FLAT COLLECTION

INTERIOR: 2 BED + DEN & 2 BATH | 897-901 SF

EXTERIOR: GARDEN TERRACE | 353-362 SF

kin
KIN COLLECTION



HOME HIGHLIGHTS

- 1 Direct access to the beautifully landscaped courtyard from your home
- 2 Large garden terrace with gas and water bib
- 3 Seamlessly transition from your living room to your garden terrace – perfect for entertaining
- 4 Master and second bedrooms on opposite sides of the home allow for optimal privacy
- 5 A spacious den makes the perfect home office or additional storage space
- 6 Large, L-shaped integrated kitchen with island and plenty of storage
- 7 Double vanity in the ensuite and frameless glass shower gives everyone their own space to refresh and rejuvenate
- 8 Two linen closets help keep your home organized
- 9 Master bedroom comfortably fits a king-size bed and features a large walk-in-closet



NORTH

Dimensions, layouts, material and feature specifications and other details are subject to change without notice and may vary from the completed development. E.&O.E.