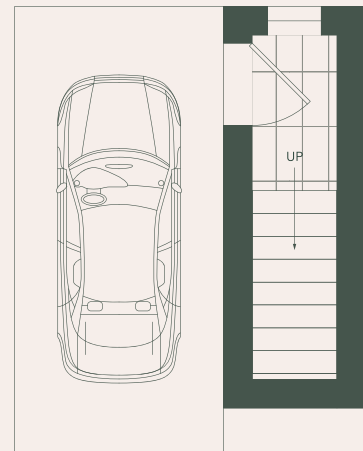


Type B3

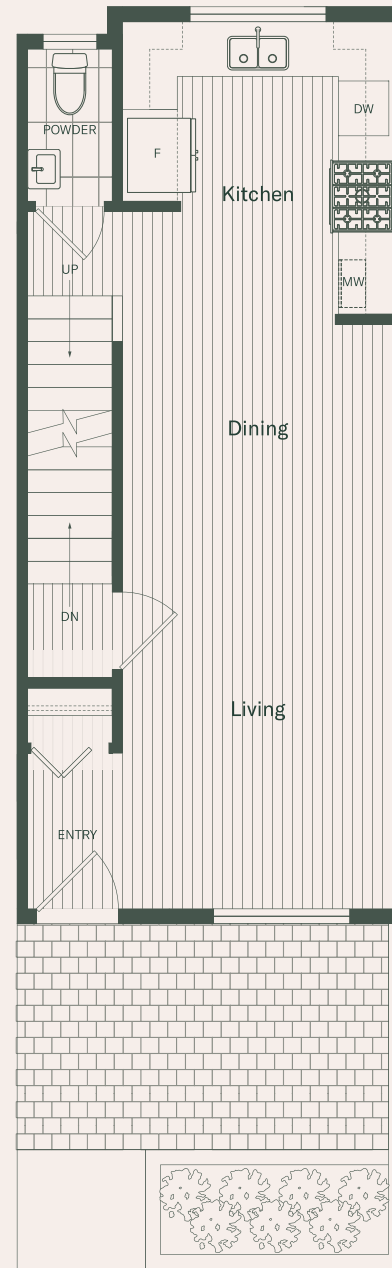
Three Bedroom & Den
with Parking Access

Total Floor Area: 1,305 sqft

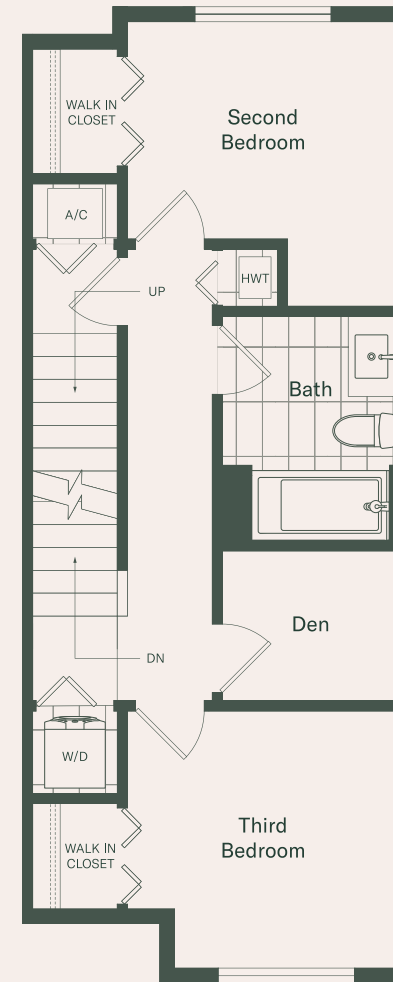
Parking Access



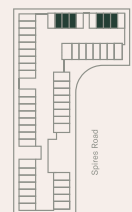
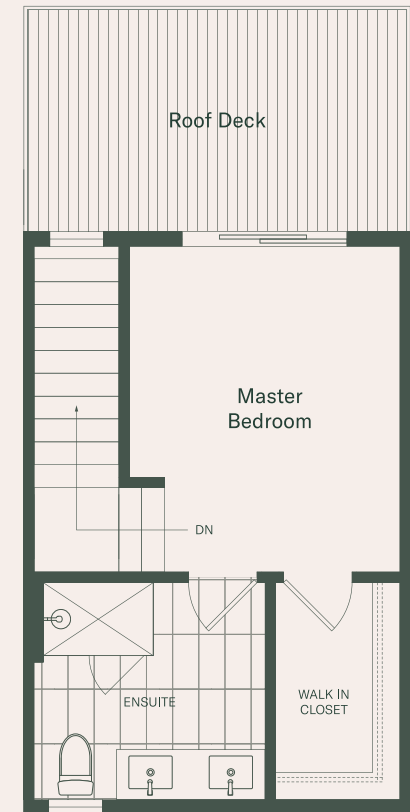
Main



Second



Third



N →

The Purchaser acknowledges and agrees that the specifications, details, dimensions and floor plans set out in any materials viewed by the Purchaser, including this floor plan, are approximate and subject to change without notice in order to address building site conditions and municipal, structural, supplier, and or architectural requirements, and different methods and standards of measurement used to measure the dimensions of floor plans. Parking stall on floor plans indicate that parking is included with the home, but does not designate the Purchaser to an adjacent stall from direct access entry.