

# VANCOUVER HOUSE

# ARCHITECT SERIES 303

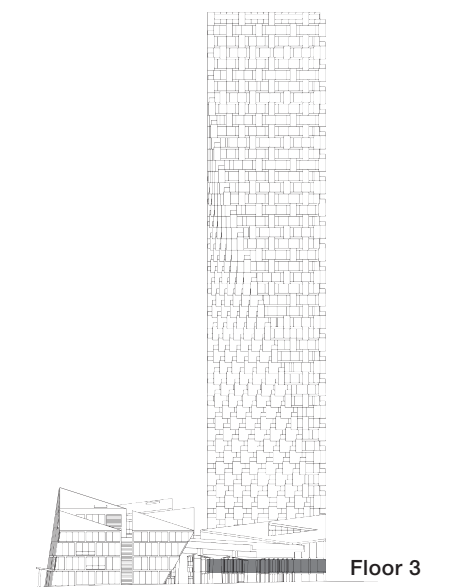
**ONE BEDROOM FLEX**

**TOTAL LIVING 526 SQ FT**

Indoor Living 400 sq ft

Outdoor Living 126 sq ft

Experience the best of indoor and outdoor living in this urban home with a generous west-facing terrace. Space is amplified by floor-to-ceiling glazing, a stylish layout, and a Murphy bed custom-designed by BIG. The view of May and Lorne Brown Park draws the eye from the moment of arrival, creating a sense of harmonious flow.



westbank

**BIG**

ARCHITECT  
SERIES

303

ONE BEDROOM FLEX

VANCOUVER  
HOUSE